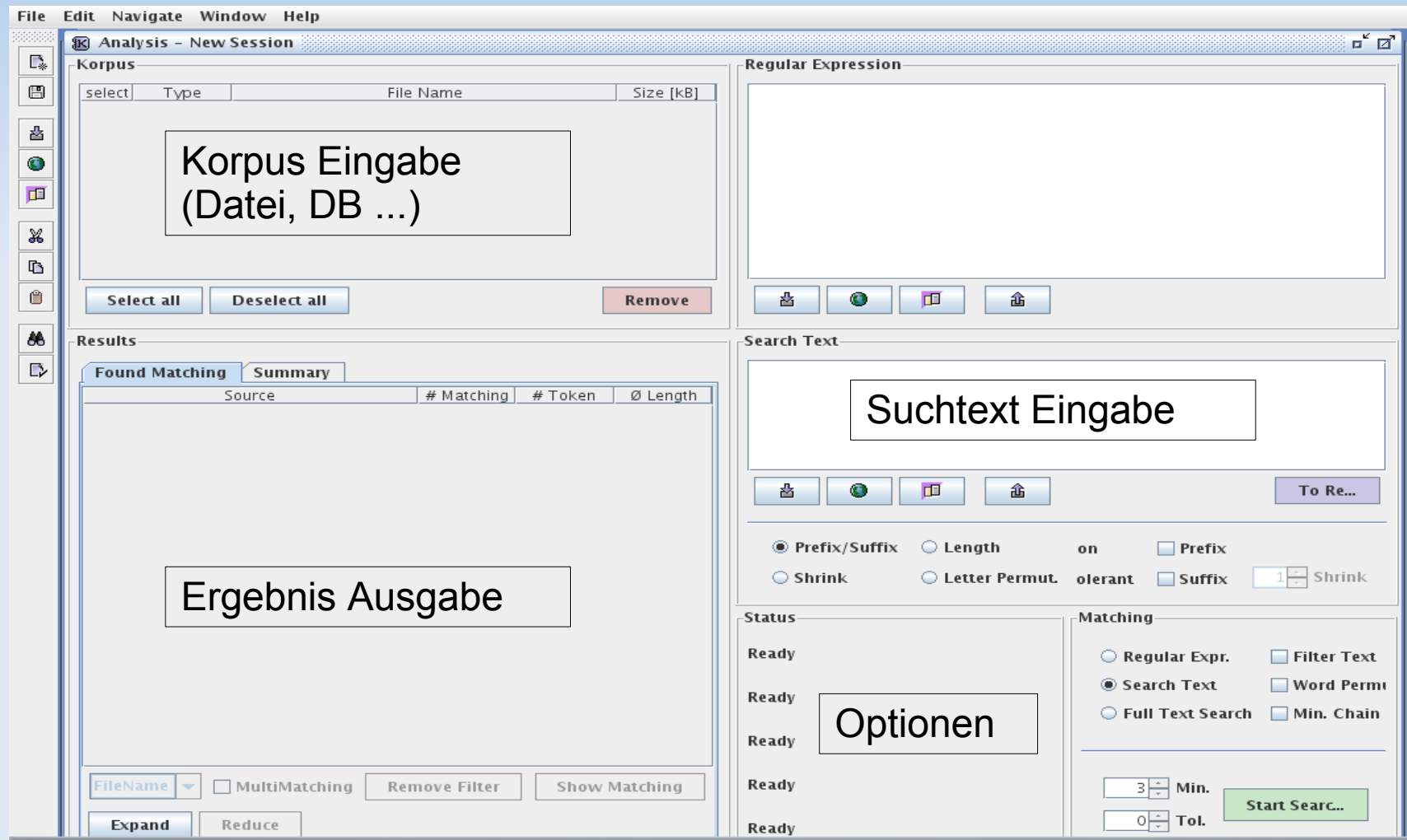


Projektpräsentation (StA)

14.07.2009

Das "KoMA" Tool (DA v. Michael Pach)



- Es wird nur eine **Teilmenge der Funktionalität** von KoMA benötigt;
- Andererseits musste **zusätzliche Funktionalität** bereitgestellt werden:
 - **Korpus-Parser** für gezielten & bequemen Zugriff auf Teile des jeweiligen Korpus (muss mit verschiedenen Korpora funktionieren);
 - **Filter**;
 - Aber auch **Anpassung bzw. Erweiterung** bestimmter KoMA-Klassen um zusätzliche Funktionalität...

Applet

CoMOn info

Corpus Matching Online

corpus choice

OLD TESTAMENT (HEBREW)

searchtext choice

start of searchtext

end of searchtext

--- choose book ---

--- choose chapter ---

--- choose verse ---

current max. search text length: 70 verses! (because of technical reasons)

filter settings

drop vowels

analysis settings

3 min. matching length

0 tolerance

permutation

search text view

0/6000

result view

source	# matching	# token	avg. length

list all show

start

Applet gestartet

The screenshot shows the CoMOn web application interface. It is divided into several sections:

- corpustext choice:** A dropdown menu showing "OLD TESTAMENT (HEBREW)".
- searchtext choice:** Two columns of dropdown menus for selecting "start of searchtext" and "end of searchtext", each with options for "book", "chapter", and "verse".
- Filter:** A section with a checkbox labeled "drop vowels" which is checked.
- analysis settings:** Input fields for "min. matching length" (set to 3), "tolerance" (set to 0), and a checkbox for "permutation".
- search text view:** A text input area with a character count "0/6000".
- result view:** A table with columns "source", "# matching", "# token", and "avg. length". Below the table are "list all" and "show" buttons.
- start:** A button at the bottom right of the interface.

Yellow callout boxes highlight the following features:

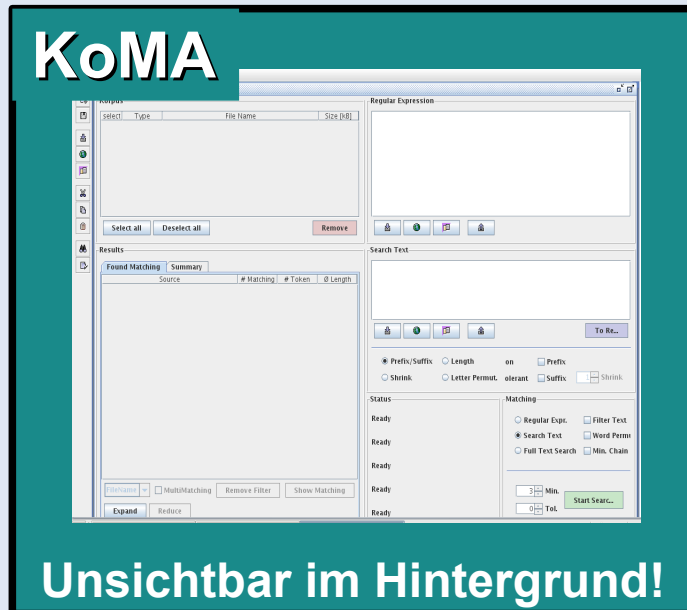
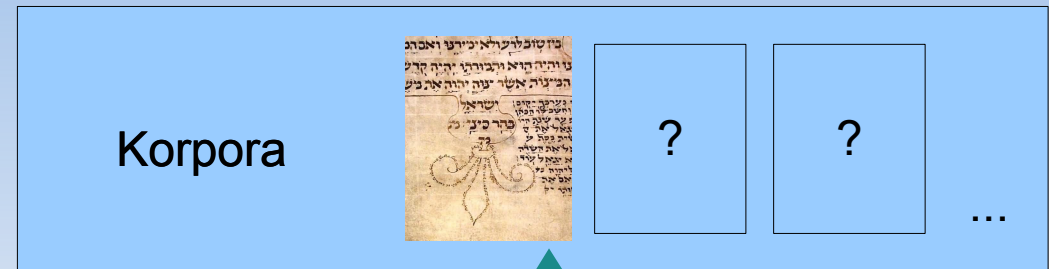
- Korpuswahl** (Corpus selection) pointing to the "corpustext choice" dropdown.
- Suchtextwahl** (Search text selection) pointing to the "searchtext choice" dropdowns.
- Filter** pointing to the "drop vowels" checkbox.
- Analyse-Optionenen** (Analysis options) pointing to the "analysis settings" section.
- Suchtextanzeige / Suchtextanpassung** (Search text display / search text adjustment) pointing to the "search text view" area.
- Analyse-Ergebnisse** (Analysis results) pointing to the "result view" table.

At the bottom left, it says "Applet gestartet".

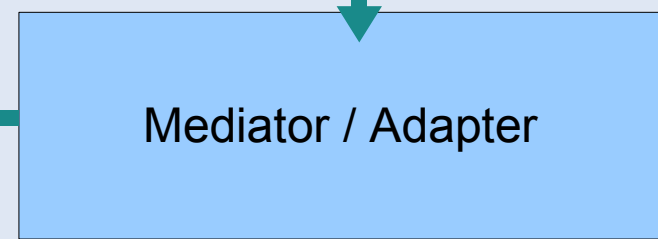
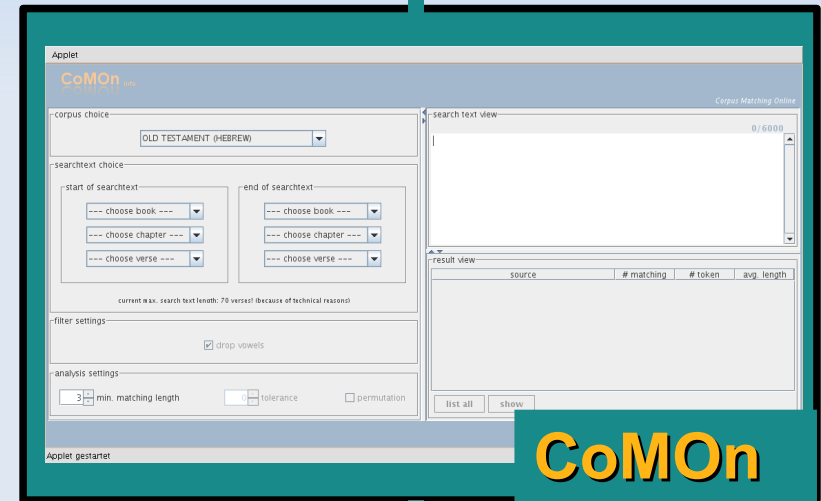
Architektur - Überblick:

→ Zwischeninstanz durch **Mediator Pattern**;

→ KoMA importiert keine Klassen aus Mediator oder CoMOn – lose Kopplung. Kommunikation mittels **Observer Pattern**.



Unsichtbar im Hintergrund!



Integriertes Korpus: AT auf Hebräisch (ASCII)



Applet

CoMOn info
Corpus Matching Online

corpus choice
OLD TESTAMENT (HEBREW)

searchtext choice

start of searchtext
--- choose book ---
--- choose chapter ---
--- choose verse ---

end of searchtext
--- choose book ---
--- choose chapter ---
--- choose verse ---

current max. search text length: 70 verses! (because of technical reasons)

filter settings
 drop vowels

analysis settings
3 min. matching length 0 tolerance permutation

search text view
0/6000

result view

source	# matching	# token	avg. length
--------	------------	---------	-------------

list all show

start

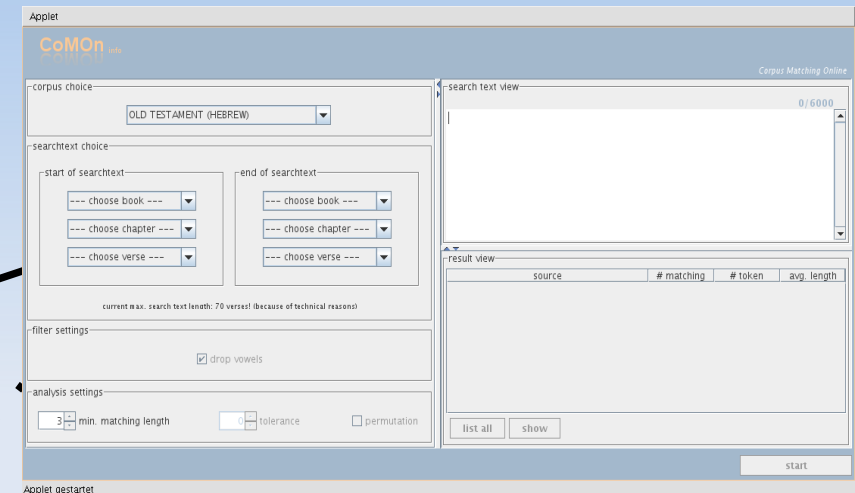
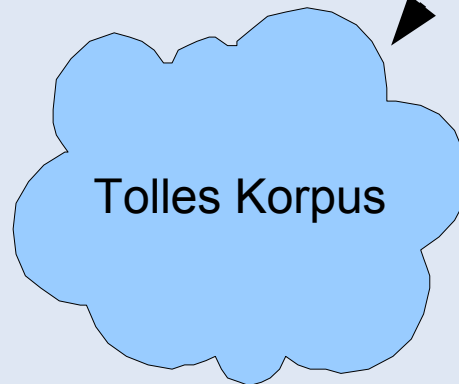
Applet gestartet

Erweiterung um weitere Korpora :

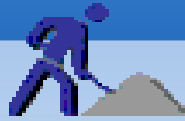
ASCII - Datei



Altes Testament
(Hebräisch)



- Problem: **Heterogenität** der Korpora und deren Aufbau bzw. Struktur.
- Lösung: **Abstraktion** über die einzelnen Korpora und ihren Aufbau; entwickeln einer Art **Plug-In-Architektur**.

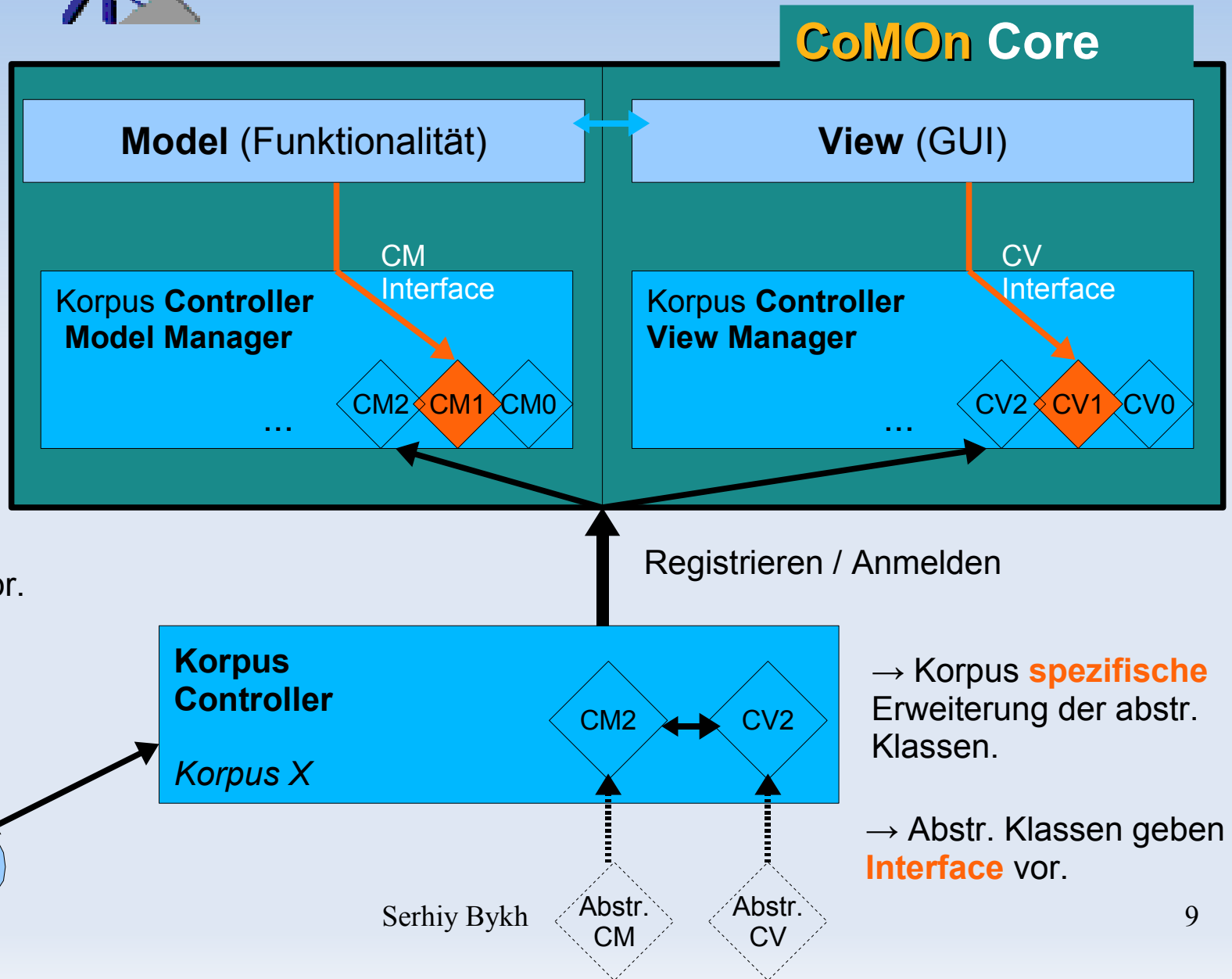


Erweiterung um weitere Korpora :

→ Das **Core** braucht keine konkreten Infos über Korpus & entspr. Controller.

→ **Kommunikation**: bekanntes Interface.

→ **Erweiterung**: Implementieren und Registrieren des entspr. Korpus Controllers.



→ Korpus **spezifische** Erweiterung der abstr. Klassen.

→ Abstr. Klassen geben **Interface** vor.

Legende: ■ Korpus Controller View (Korpus abhängig);
■ Main View (fest / generisch);

Applet

CoMOn_{info}
CORPUS MATCHING ONLINE

Corpus Matching Online

corpus choice
OLD TESTAMENT (HEBREW)

searchtext choice

start of searchtext
--- choose book ---
--- choose chapter ---
--- choose verse ---

end of searchtext
--- choose book ---
--- choose chapter ---
--- choose verse ---

current max. search text length: 70 verses! (because of technical reasons)

filter settings
 drop vowels

analysis settings
3 min. matching length 0 tolerance permutation

search text view
0/6000

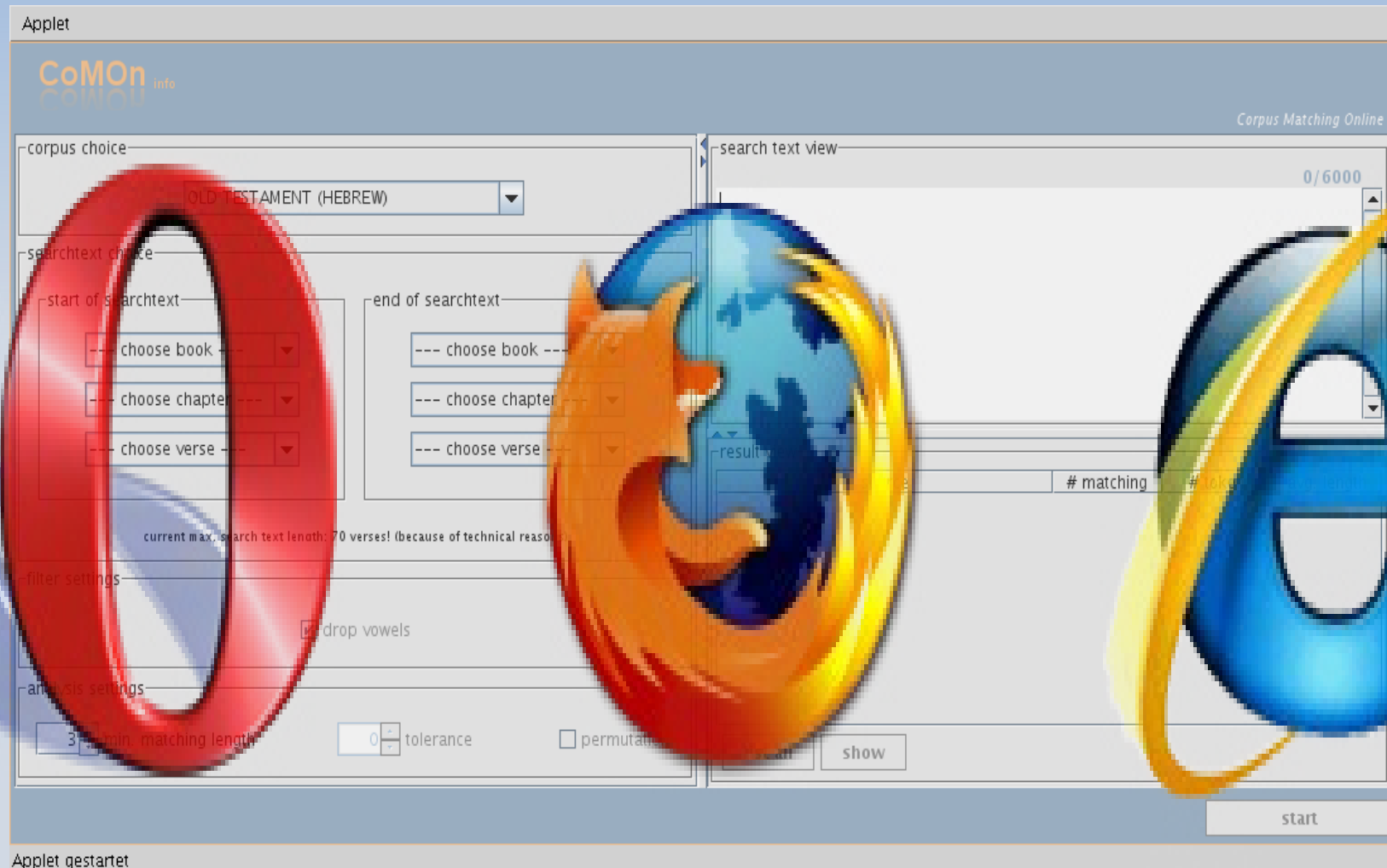
result view

source	# matching	# token	avg. length
--------	------------	---------	-------------

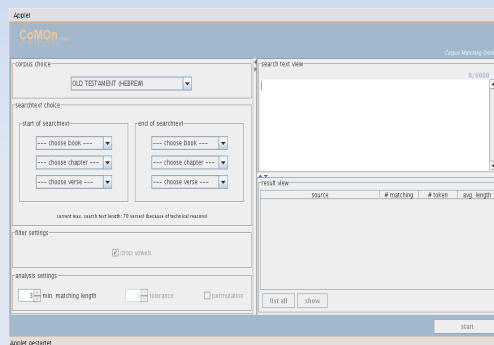
list all show

start

14.07 Applet gestartet



Technologie: **Java Applet** (JApplet)



→ Tool in **Aktion** ...

<http://localhost/applets/comon>

Fragen?

Anregungen?

Kritik?

Ich bedanke mich für die Aufmerksamkeit!